

Greenstone Valley takahē. First year update.

August 2023 to August 2024.

It's been one year since we returned 28 takahē to the Greenstone Valley.

It appears the best takahē habitat is between Steele creek and McKellar hut with the takahē quickly settling in territories within this zone. There has been very little movement away from release sites, all the transferred takahē are alive and doing well.

One single female, Tahu, walked 39km out to Mavora campground at Easter. She is the only takahē to have left the valley. She is recovering at Burwood Takahē Centre after receiving a foot injury during her adventure.

Last summer eight pairs nested, with four of these pairs successfully raising chicks to one year old. A 50% success rate is comparable to recruitment in the Murchison Mountains, so this is a great result, and beyond our expectations for the first breeding season.

Over the winter adult takahē were captured to remove GPS loggers and check body condition and weights. They were all in great shape, and all but one had put on weight since release.

There are 330 traps in the Greenstone. Pest indexing cameras are run twice a year to keep an eye on predator numbers in the valley. To date we have not lost any Greenstone takahē to predation.

We are getting regular reports of trampers and hunters seeing takahē, it's great the public are seeing takahē in the wild. With up to 13 breeding pairs in the valley this summer this is sure to increase!

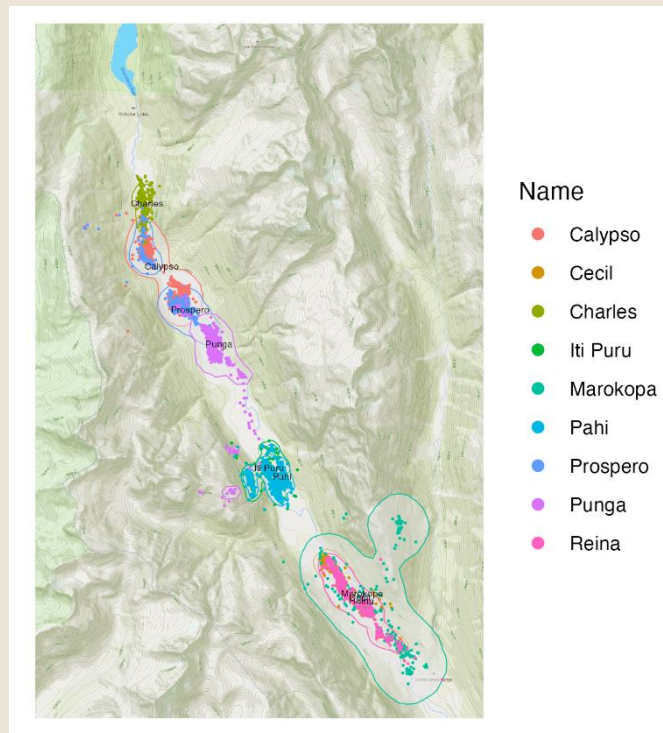


Figure 1. GPS logger data recovered from nine takahē.

<https://www.doc.govt.nz/our-work/takahe-recovery-programme/>